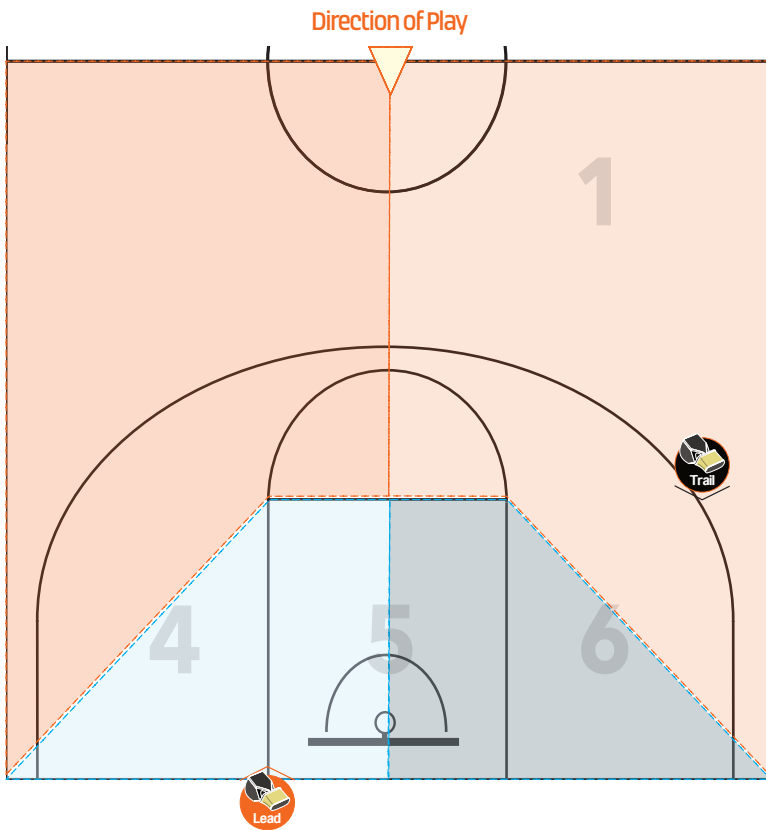


# Inbounding the ball **after a violation or non-shooting foul** 2PO Mechanics

## When 'Lead' Inbounds the ball



Following non-shooting foul and any violation in part of Box 4, 5 and part of Box 6, the lead referee will inbound the ball on the baseline closest to where the infraction occurred.

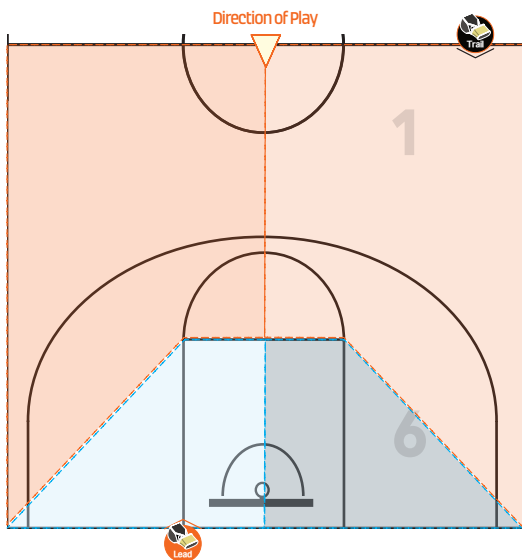
Part of Box 4 (shaded blue), and to the left side of Box 5, inbounding to the left of the basket.

Part of Box 6 (shaded blue) and to the right of Box 5 inbounding to the right of the basket.

The shaded orange sections the trail referee will inbound the ball closest to where the infraction occurred.

Lead & trail to adjust to their new position accordingly, depending where the ball is now being inbounded by lead.

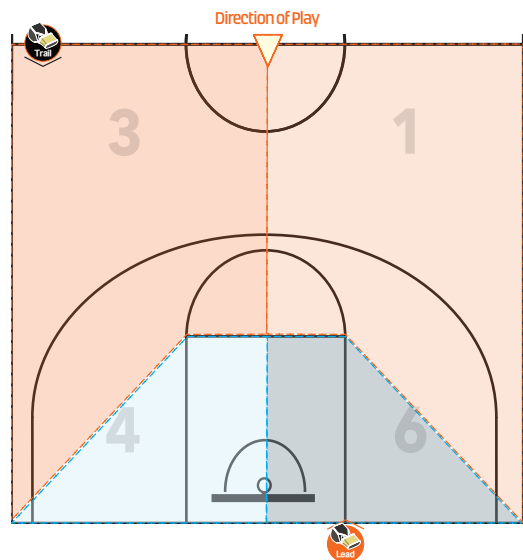
## When 'Trail' Inbounds the ball



Following a back court violation, the ball will be inbounded opposite the table in the front court, with a new 14 second offence.

Following non-shooting foul and any violation in box 1 and 6, the trail referee will inbound the ball on the sideline closest to where the infraction occurred.

The shaded orange sections the trail referee will inbound the ball closest to where the infraction occurred.



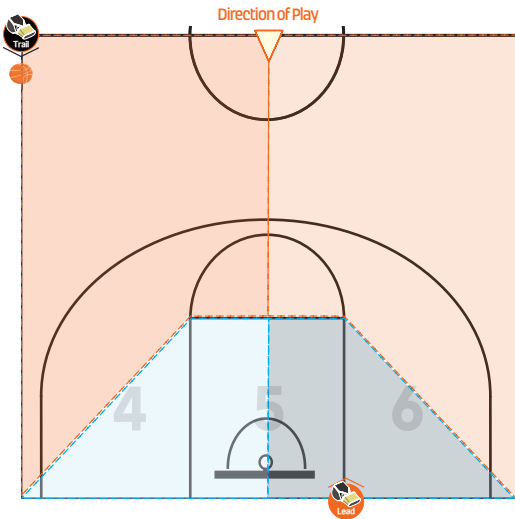
Following non-shooting foul and any violation in box 3 and 4, the trail referee will inbound the ball on the sideline closest to where the infraction occurred.

The shaded orange sections the trail referee will inbound the ball closest to where the infraction occurred.

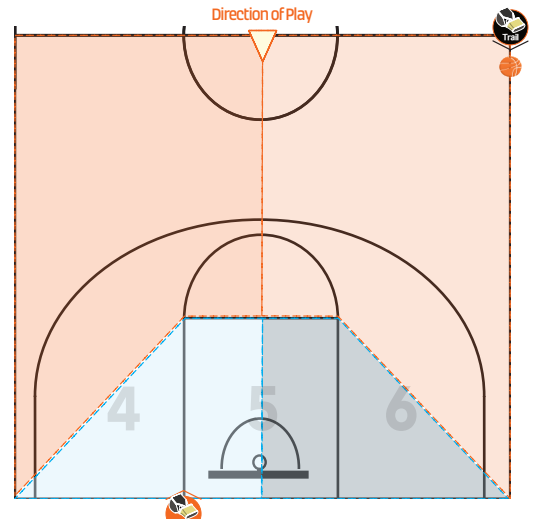
Lead & trail to adjust to their new position accordingly.

# Inbounding the ball **after a violation or non-shooting foul** 2PO Mechanics

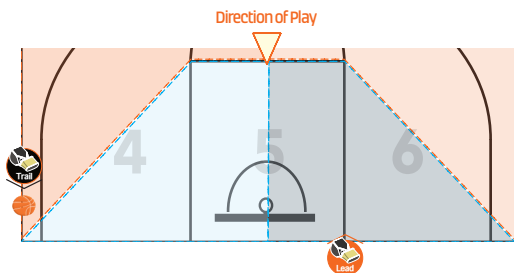
## Inbounds the ball Examples



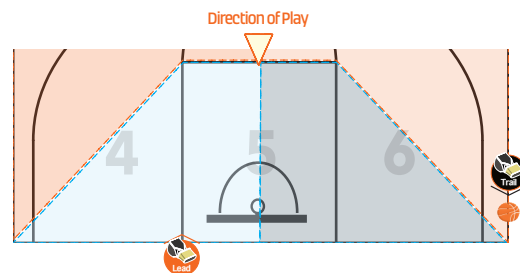
**Inbounding Box 3 and Box 4**, where the ball is being inbounded on the sideline. The trail referee inbounds the ball while lead will set-up on the opposite side of the basket on the baseline.



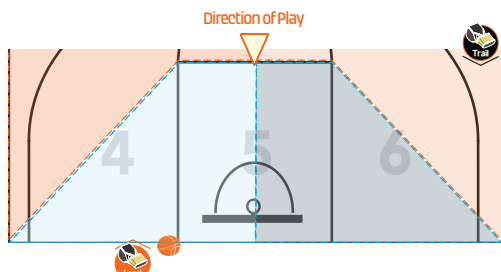
**Inbounding Box 1 and Box 6**, where the ball is being inbounded on the sideline. The trail referee inbounds the ball while lead will set-up on the opposite side of the basket on the baseline.



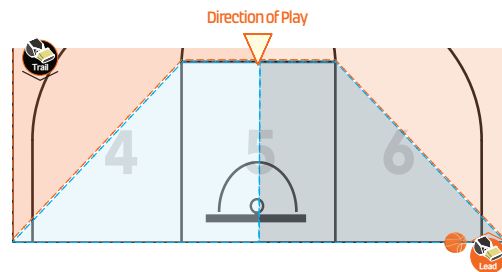
**Sideline inbound (box 4)**, where the ball is being inbounded on the sideline. The trail referee inbounds the ball while lead will set-up on the opposite side of the basket on the baseline.



**Sideline inbound (box 6)**, where the ball is being inbounded on the sideline. The trail referee inbounds the ball while lead will set-up on the opposite side of the basket on the baseline.



**Baseline in-bound (box 4 & 5)**, where the ball is being inbounded on the baseline. The lead referee inbounds the ball while trail will set-up on the opposite side of the basket in the trail position.



**Baseline in-bound (box 5 & 6)**, where the ball is being inbounded on the baseline. The lead referee inbounds the ball while trail will set-up on the opposite side of the basket in the trail position.